

Ecological Data to Support Ocean Management

MAY 5, 2022

Karl Vilacoba
MARCO Portal Project Manager,
Communications Director,
Monmouth University Urban Coast Institute

What's on the Portal?

URL: portal.midatlanticocean.org

Email: portal@midatlanticocean.org



6,000+ map layers organized under 13 themes



Tools for users to share maps and collaborate in groups



Instructional and educational resources: Portal blog, "Ocean Stories," calendar, webinars

Active	MyPlanner	<u>Data</u>	Legend
▸ Administrative			
▸ Fishing			
▸ Fishing - Communities at Sea (by Port)			
▸ Marine Life			
▸ Marine Life Library (Species Specific)			
▸ Maritime			
▸ Oceanography			
▸ Recreation			
▸ Renewable Energy			
▸ Seafloor Habitat			
▸ Security			
▸ Socioeconomic			
▸ Water Quality			



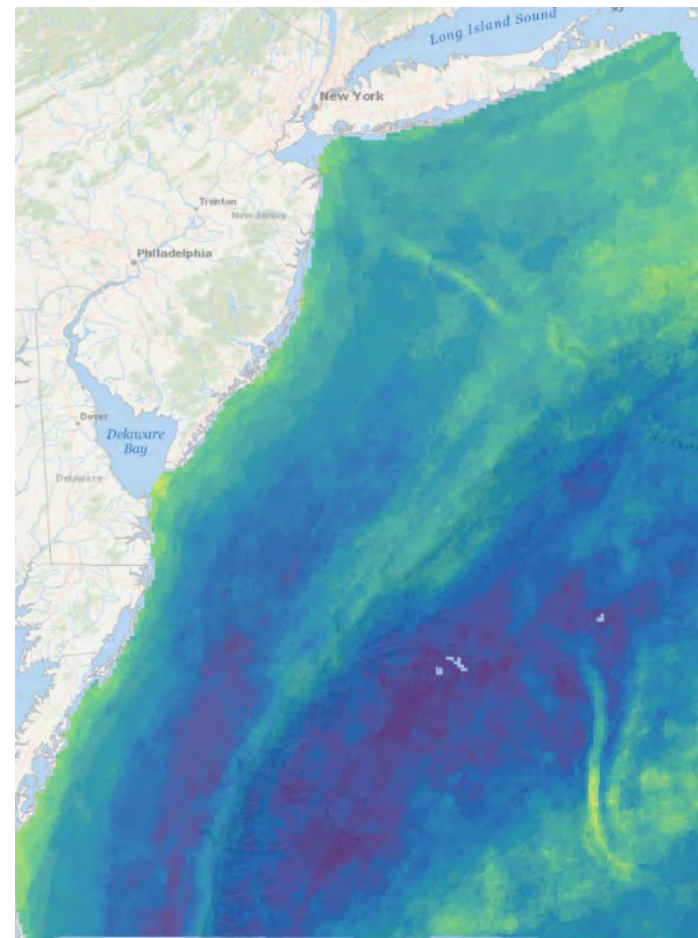
The Mid-Atlantic Ocean Data Portal Team

The Portal is maintained by a technical team consisting of the Monmouth University Urban Coast Institute, Rutgers University Center for Remote Sensing and Spatial Analysis, Duke University Marine Geospatial Ecology Lab, NYS Department of State, and Ecotrust under the guidance of MARCO.

It was developed with grant support from the Gordon and Betty Moore Foundation, National Oceanic and Atmospheric Administration, and the states of Virginia and New York.

Marine Life Data & Analysis Team Products

- **AVIAN**: Abundance, core abundance areas, and species richness for 22 groups (e.g. All Species, Coastal Waterfowl, Higher Collision Sensitivity); annual and seasonal distributions for 50 species
- **FISH**: Fall and spring biomass, species richness, and core biomass areas for 13 groups (e.g. All Species, Diadromous, Distribution Vulnerable to Climate Changes); seasonal distributions for 80 species
- **MARINE MAMMAL**: Total abundance, core abundance areas, and species richness for 8 groups (e.g. All Cetaceans, Baleen Whales, Sound Sensitivity Low Frequency); monthly and annual distributions for 30 species



All Avian Species: Core Abundance Area – Mid-Atlantic Scale

NEW: Marine Mammal Updates



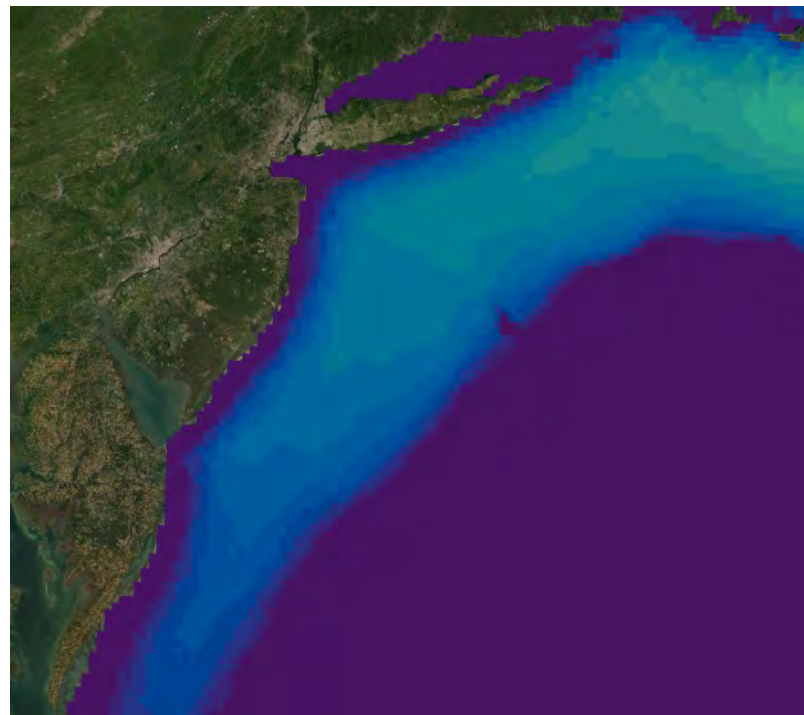
North Atlantic right whale maps updated based on recent data and updated MGEL model



Cetacean group maps that include right whales updated



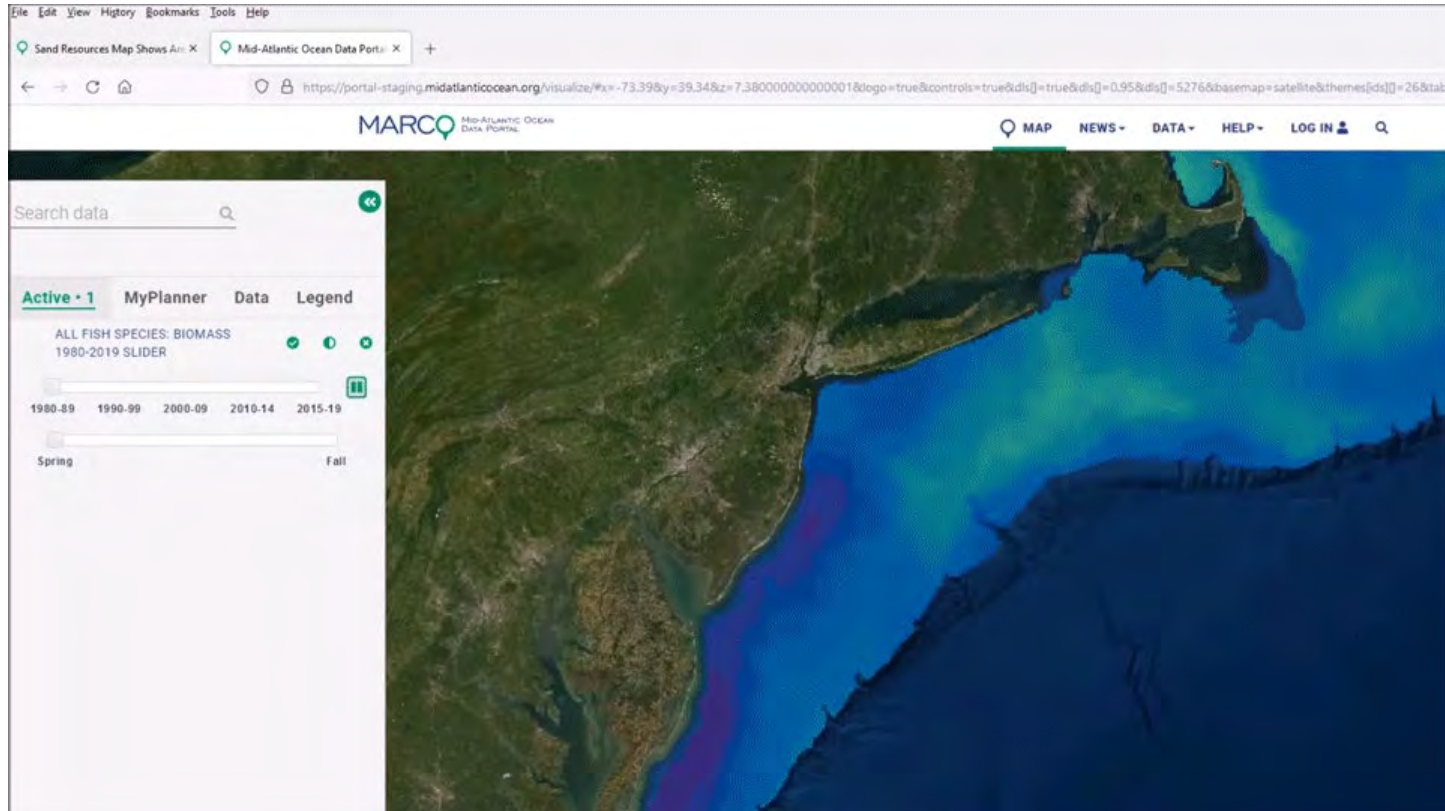
Updated sound sensitivity group maps



*North Atlantic Right Whale,
May Abundance*

More Info at midatlanticocean.org/news

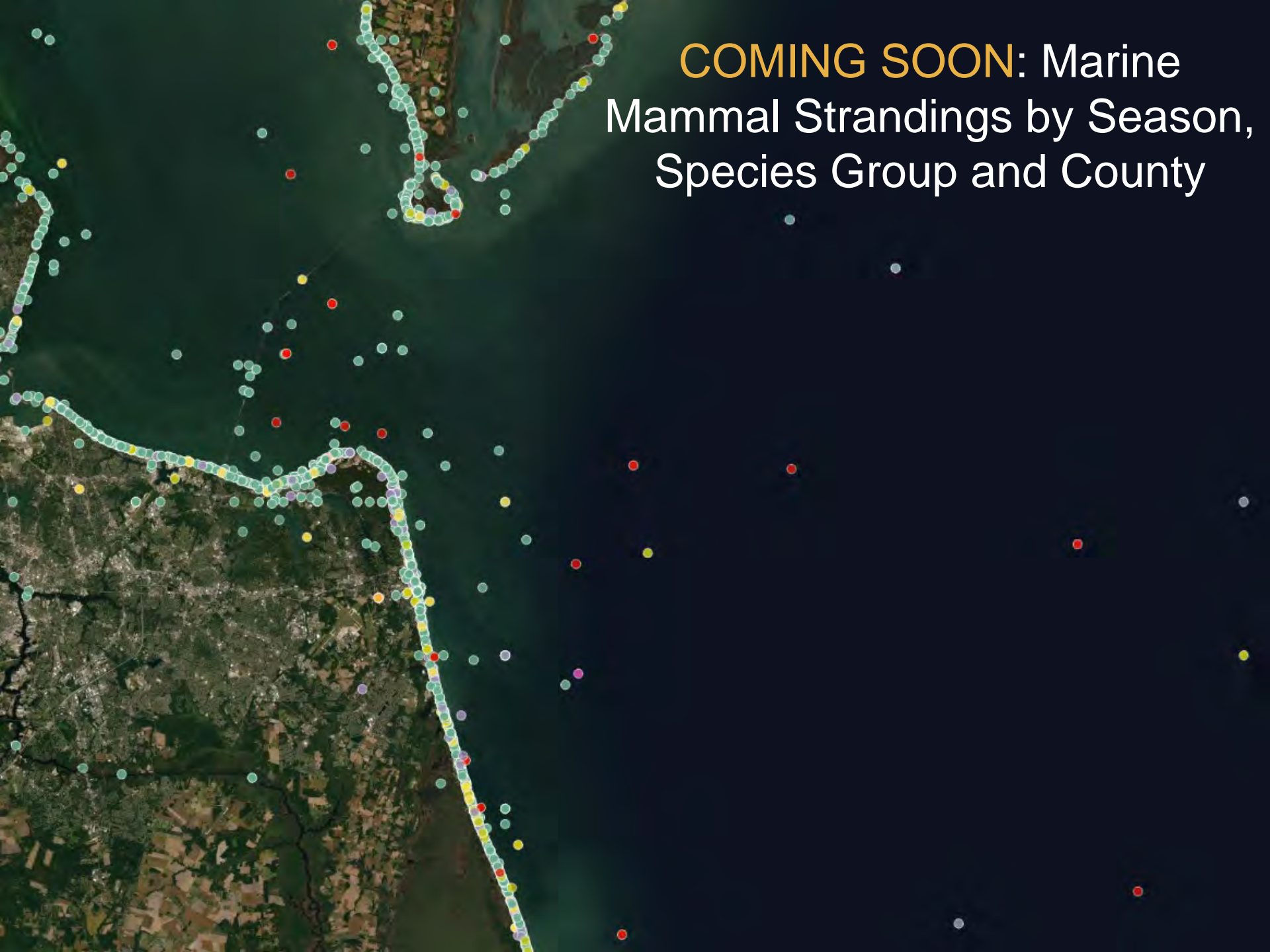
COMING SOON: Fish Updates



All Fish Species: Biomass 1980-2019 Slider (Draft)

- Maps for All Fish Species, Demersal Fish, Diadromous Fish and Forage Fish for 1980-89, 1990-99, 2000-09, 2010-14 and 2015-19
- Distributions of fish species potentially vulnerable to EMF

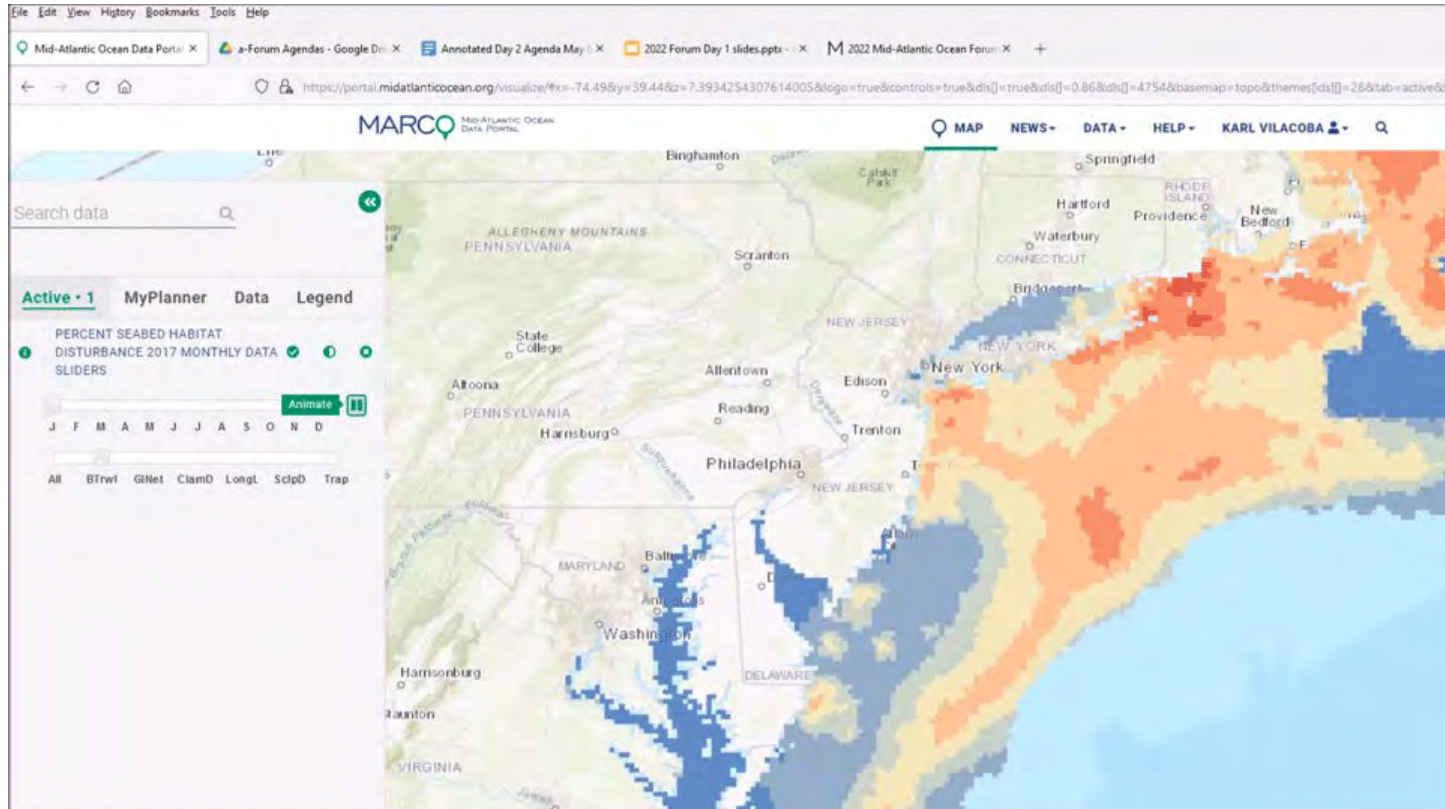
COMING SOON: Marine Mammal Strandings by Season, Species Group and County



An aerial photograph of a coastal region, likely in the Pacific Northwest, showing a large river delta on the left and a coastline extending to the right. Several areas are highlighted in yellow, indicating watch areas for whales and dolphins. These areas include a large region near the river mouth, a smaller area further up the coast, and a large, irregularly shaped area in the open ocean. Thin white lines connect some of these areas, suggesting a network or boundary. The text 'COMING SOON: Whale and Dolphin Watch Areas' is overlaid on the right side of the image.

COMING SOON: Whale
and Dolphin Watch Areas

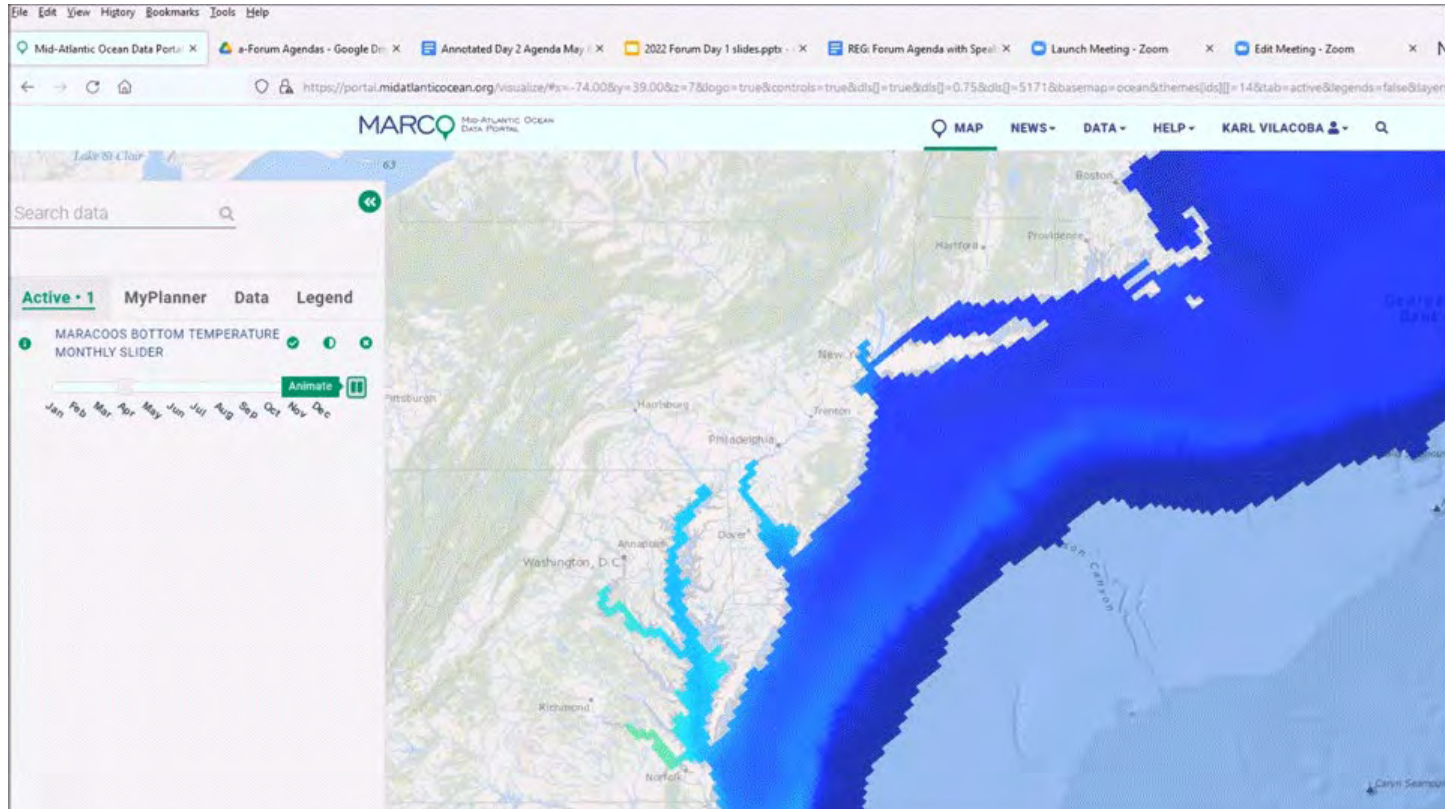
Seafloor Habitat Theme



Percent Seabed Habitat Disturbance 2017 Monthly Sliders (Bottom Trawl)

- Bathymetry of ocean floor and canyons
- Sediment types, seabed mobility and shear stress, shoals
- Artificial reef locations, modeled fishing effects

Also See: Oceanography Theme



MARACOOS Bottom Temperature Monthly Slider

- Long-term maps summarizing real-time data on MARACOOS OceansMap: surface temps, bottom temps, currents
- Net primary productivity, fronts, wind speeds



MID-ATLANTIC OCEAN
DATA PORTAL

RESOURCES FOR
REGIONAL OCEAN PLANNING

Thank You!

Karl Vilacoba
Portal Project Manager
kvilacob@monmouth.edu

Nick Napoli
MARCO Senior Advisor
NROC Executive Director
nicknapoli01@gmail.com