

Habitat Protection

Mid-Atlantic Governors' Ocean Summit

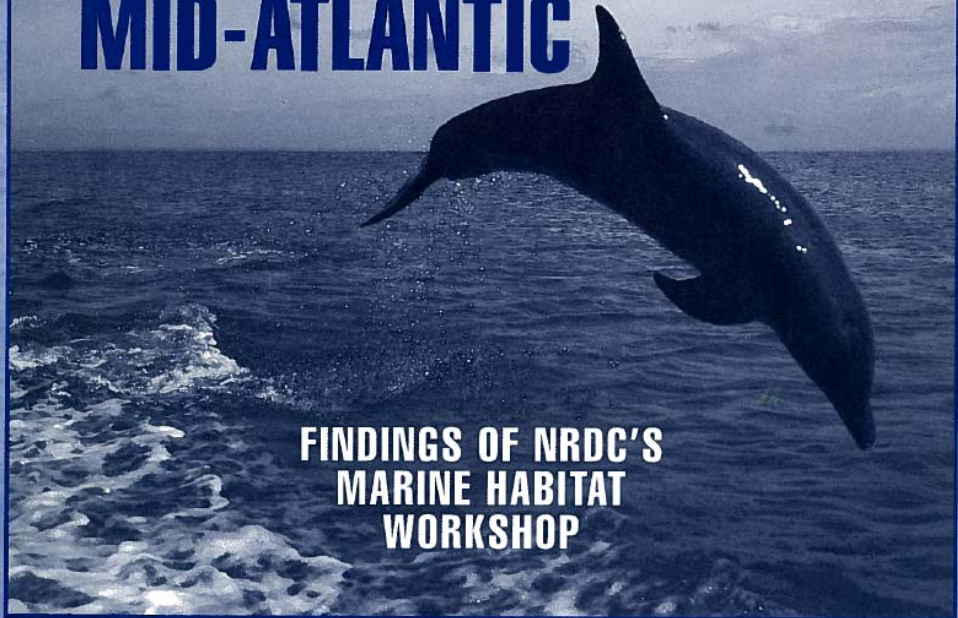
June 4, 2009

Sarah Chasis, NRDC



<http://www.nrdc.org/water/oceans/priority/intro.asp>

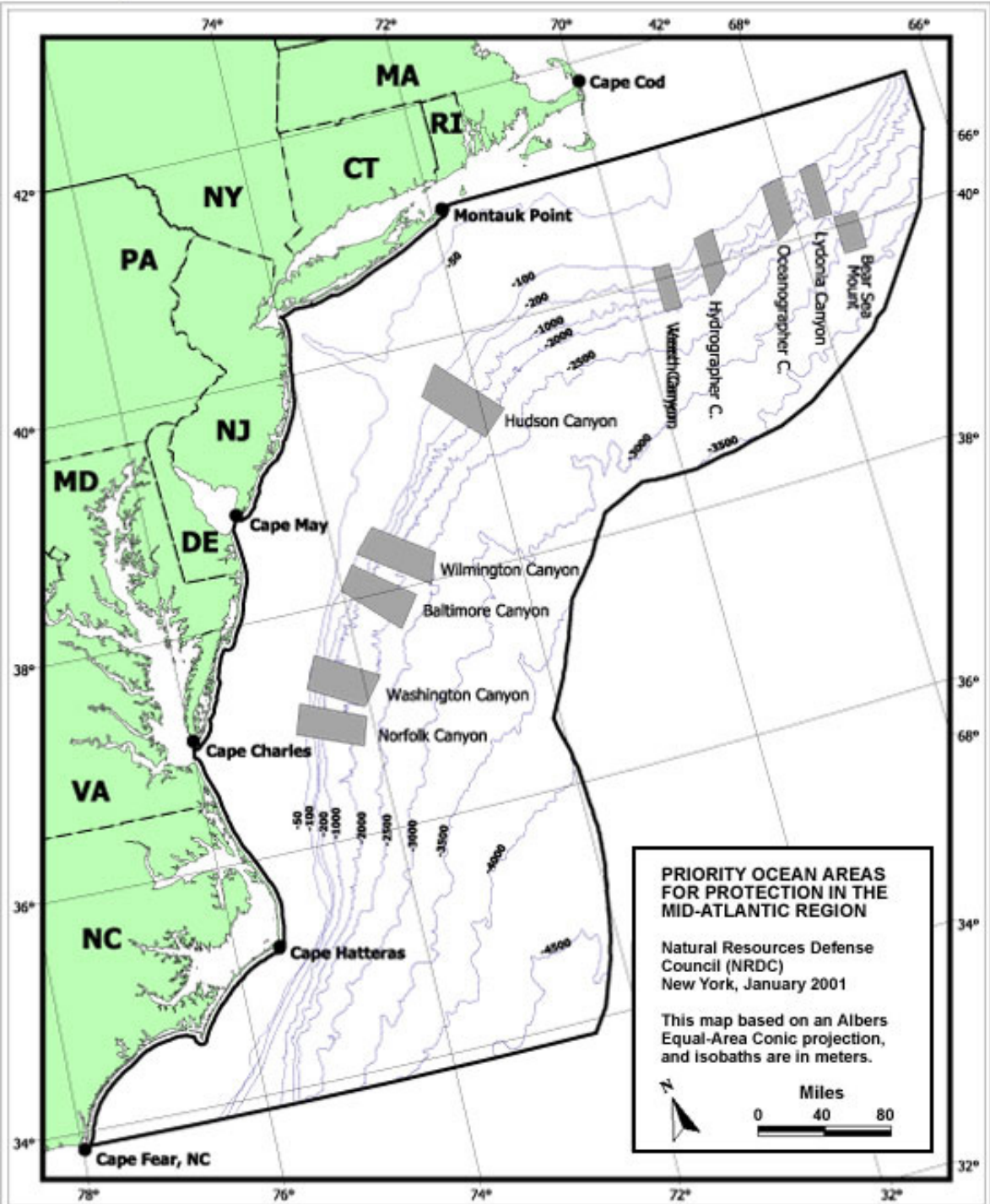
PRIORITY OCEAN AREAS FOR PROTECTION IN THE MID-ATLANTIC



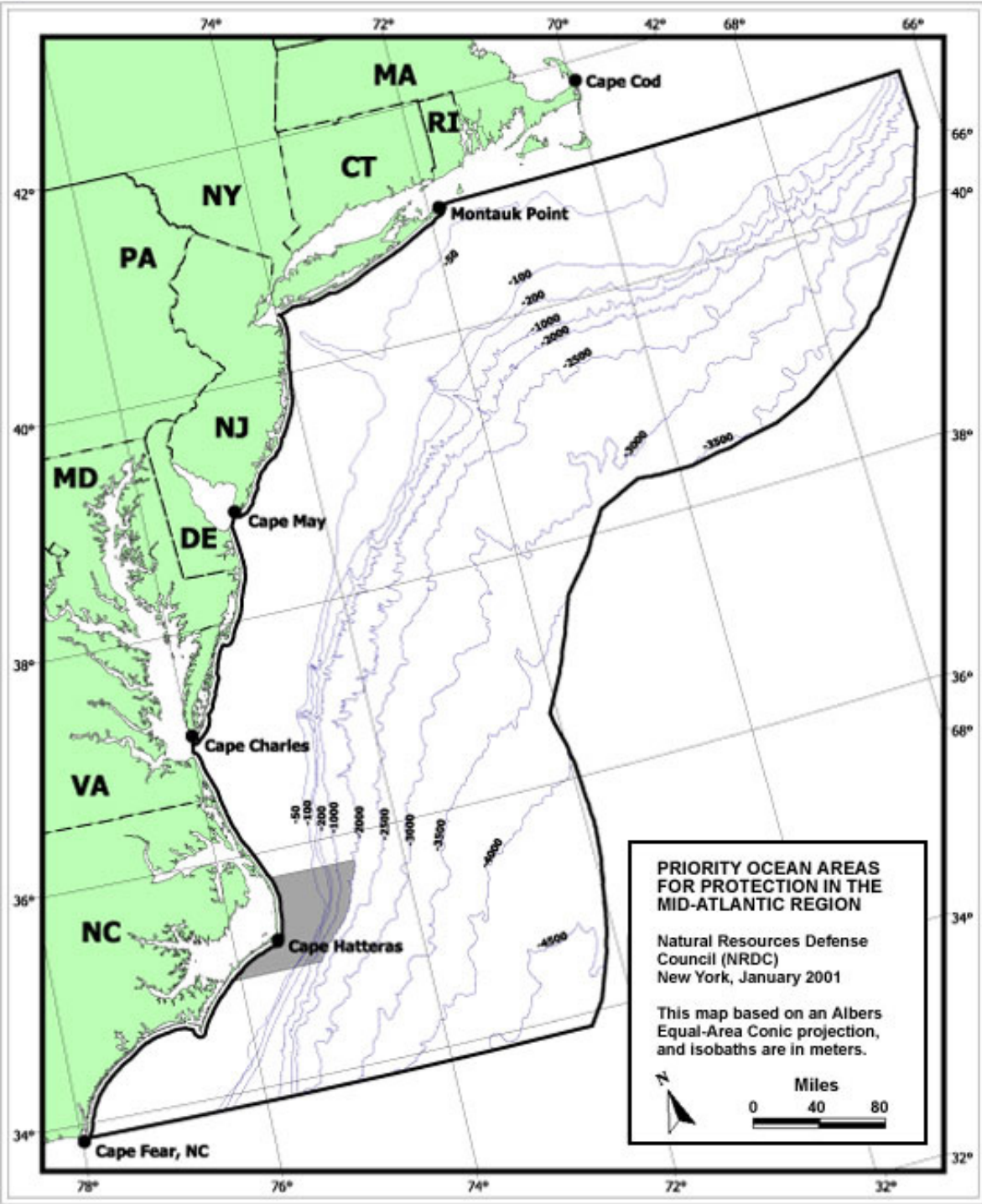
**FINDINGS OF NRDC'S
MARINE HABITAT
WORKSHOP**



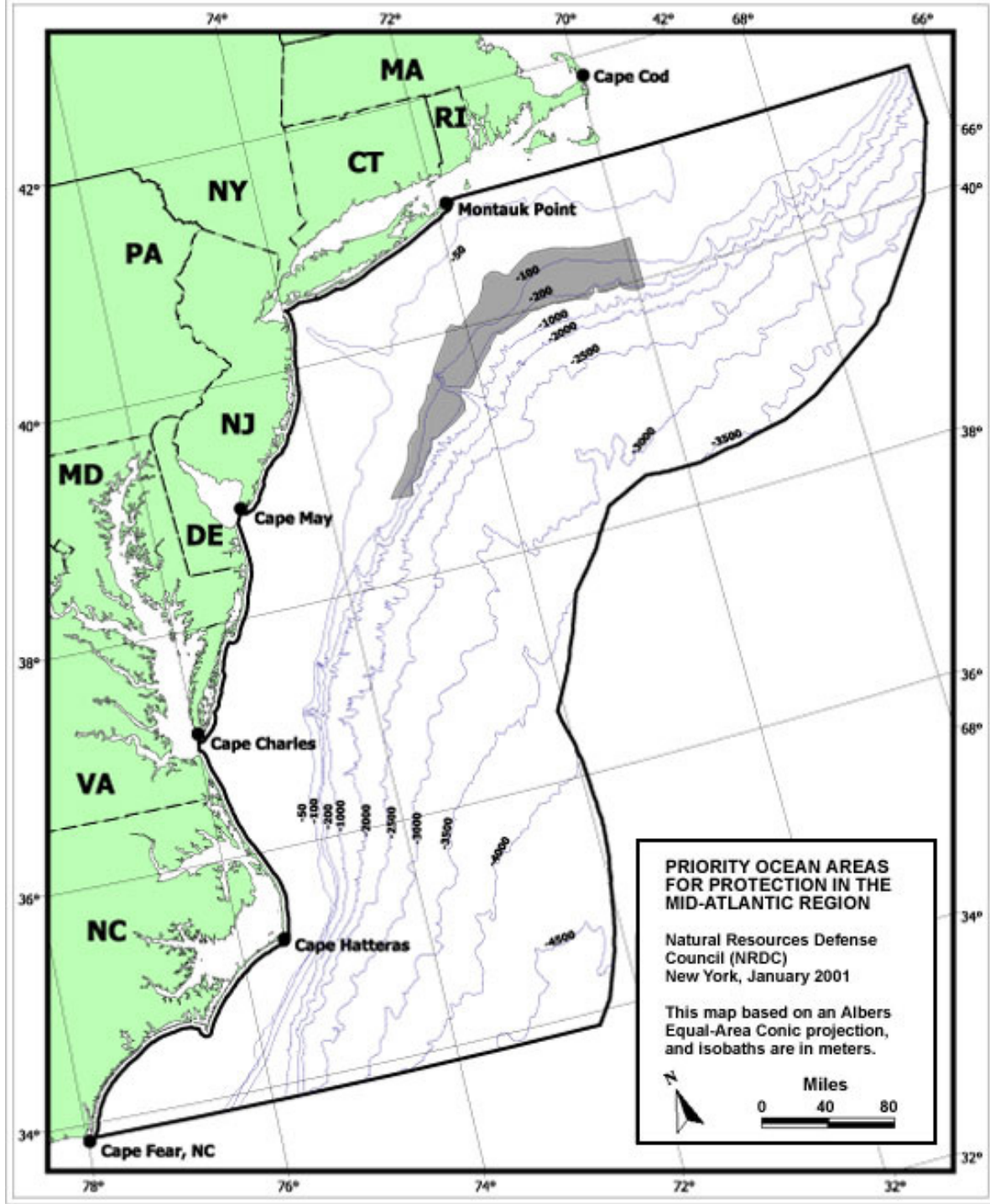
Submarine Canyons



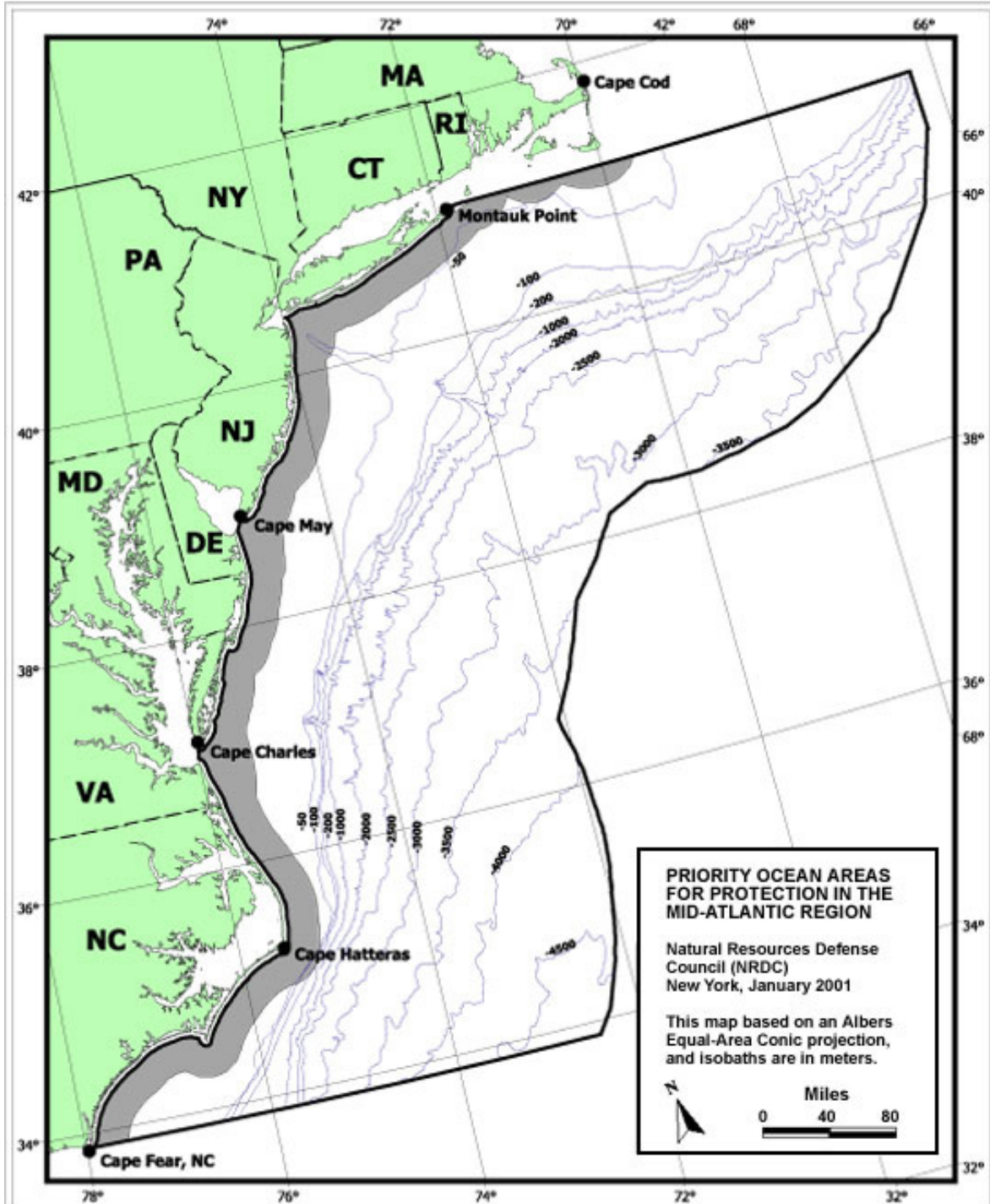
Cape Hatteras



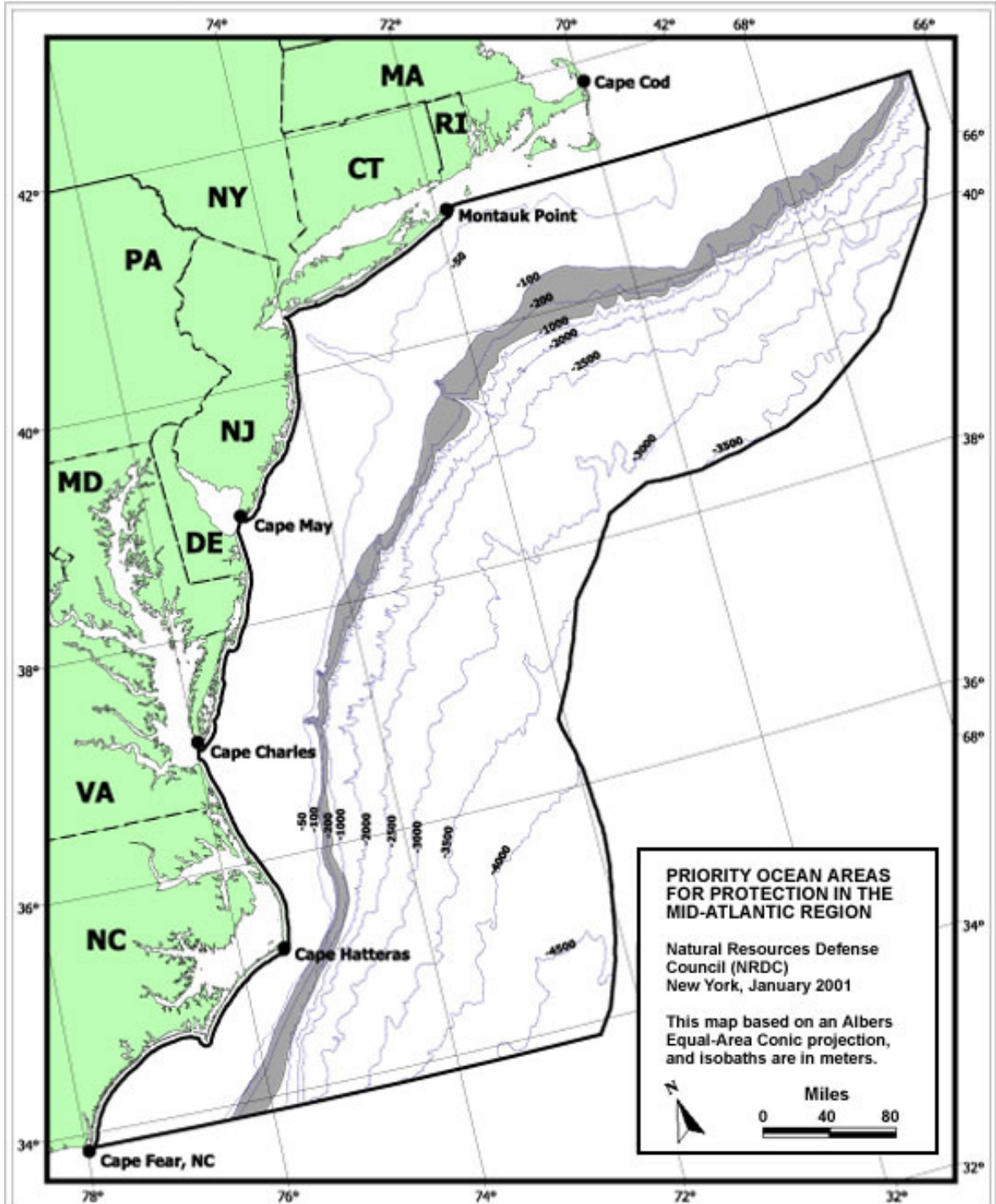
Tilefish Habitat

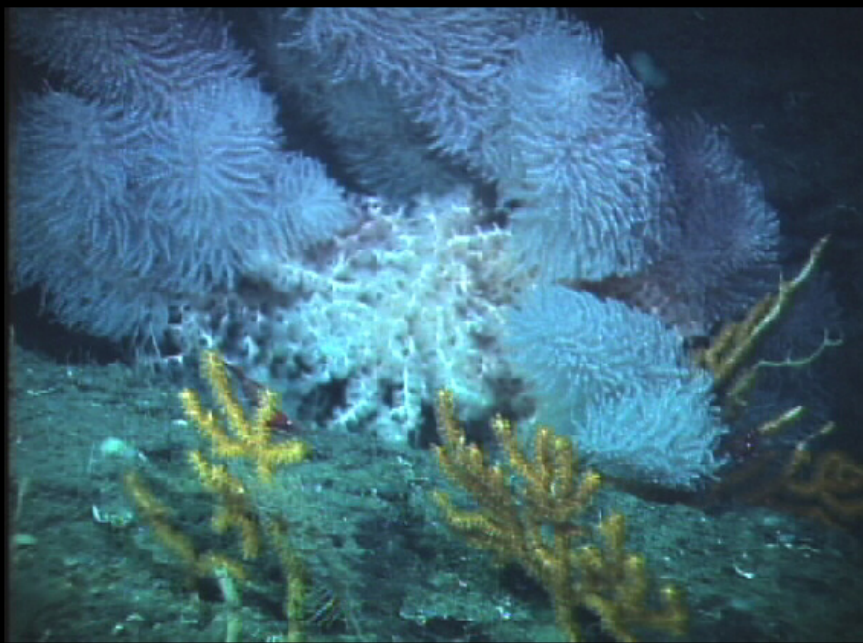


Nearshore Corridor



Continental Shelf/ Slope Break





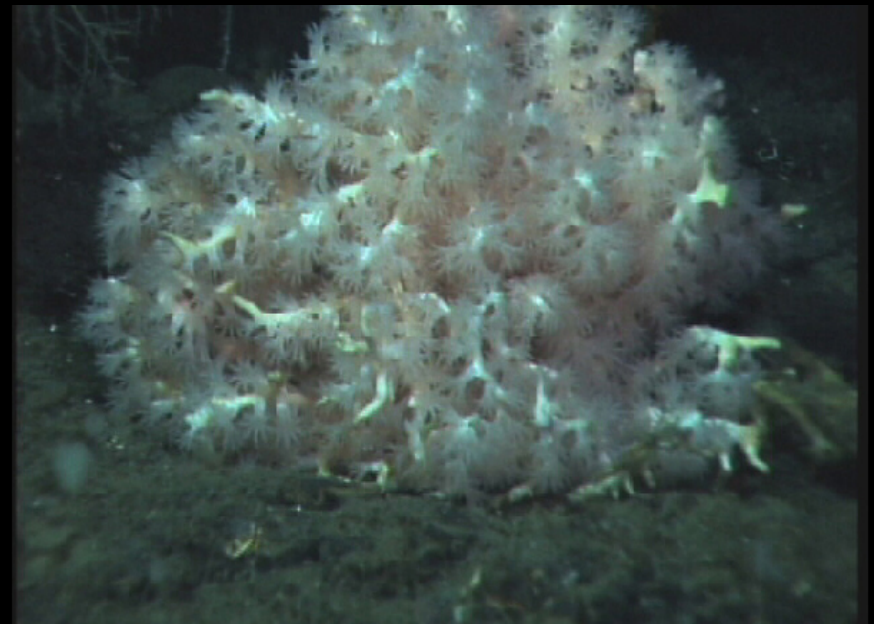
Soft corals (*Paramuricea*, *Anthothella*, *Thourella*)



Closeup of colonial anemones & soft coral (*Thourella* sp.)



Venus flytrap anemone (*Actinoscyphia saginata*)



Soft coral (*Anthothella* sp.)

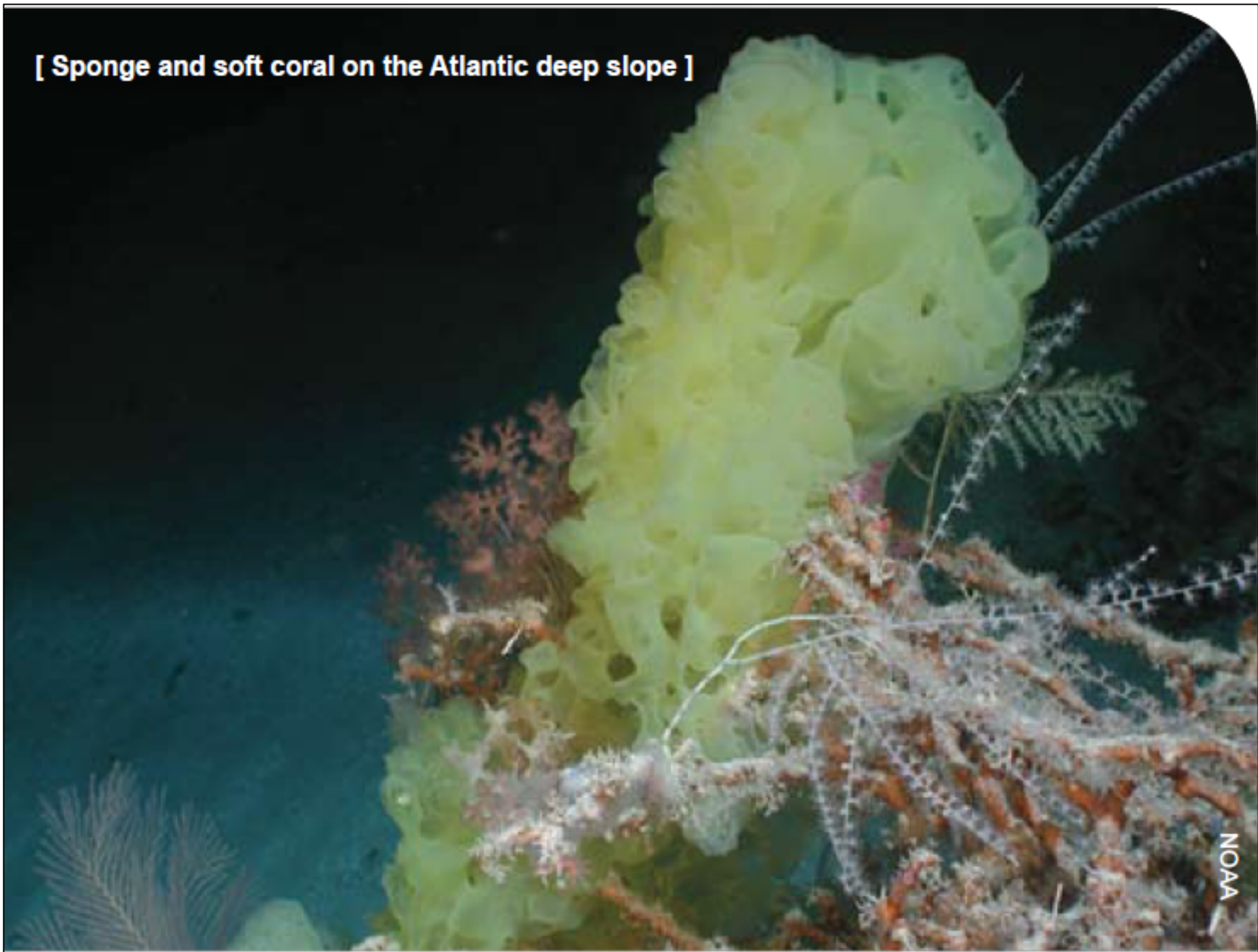
White anemone







[Sponge and soft coral on the Atlantic deep slope]





A large American lobster (*Homarus americanus*) on open sand

Photo: NURC-NA&GL

Bottom Trawling

Trawling impacts:

- Benthic life
- Eradicates soft coral
- Sponge communities

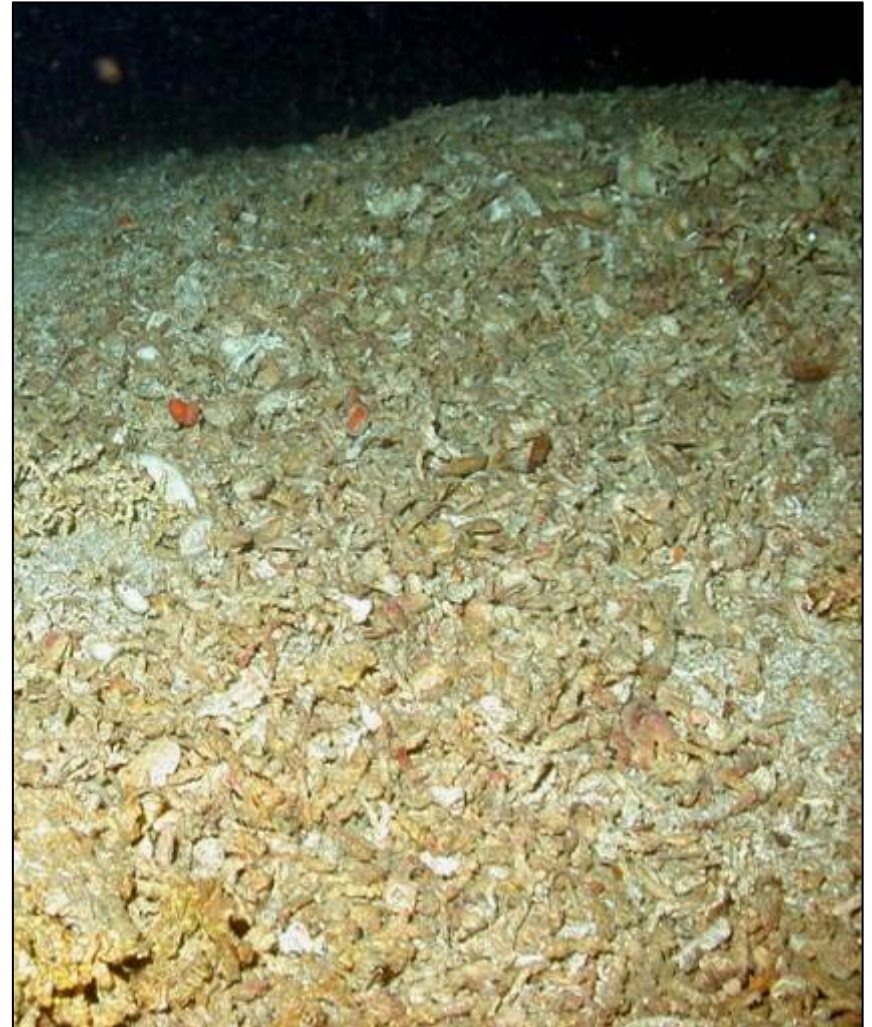


Source: Dr. Daniel Pauly, "The Unfolding Collapse of Global Fisheries: Implications for Conservation." PowerPoint Presentation, 5 June 2002.

Untrawled and Trawled *Lophelia* Reefs (Norway)



Untrawled and Trawled *Oculina* Reefs (E Coast Florida)



Untrawled and Trawled *Lophelia* Reefs (Scotian Shelf, Canada)



Untrawled and Trawled Deep Coral Forests (Aleutian Islands, AK)





Recommendations

- **PROTECT CANYONS NOW**
- **IDENTIFY AND PROTECT IMPORTANT NEARSHORE HABITATS**
 - **IDENTIFY IMPORTANT ECOLOGICAL AREAS WITHIN 30 MILES OF SHORE**
 - **PROTECT THOSE AREAS AS PART OF A MARINE SPATIAL PLANNING PROCESS**

